

## International Journal of Innovative Research in Science, Engineering and Technology

(A High Impact Factor, Monthly, Peer Reviewed Journal)

Visit: [www.ijirset.com](http://www.ijirset.com)

Vol. 6, Issue 11, November 2017

# A Survey on Online Transfer Learning With Multiple Homogeneous or Heterogeneous Sources

Ashish P. Gaigol, Prof. Himanshu U. Joshi

Student, Department of Computer Engineering, JSPM's Imperial College of Engineering and Research, Pune, Savitribai  
Phule Pune University, Pune India.

Professor, Department of Computer Engineering, JSPM's Imperial College of Engineering and Research, Pune,  
Savitribai Phule Pune University, Pune India.

**ABSTRACT:** We research another machine learning structure called Online Transfer Learning (OTL) that intends to exchange information from some source space to a web based learning undertaking on an objective area. Exchange learning systems have been comprehensively connected on applications where marked information in an objective space is hard to acquire while a great deal of named information is accessible in related source areas. There can be various source areas that are identified with the objective space, and how to join them is as yet an open issue. In this paper, we look to use named information from various source spaces to upgrade order execution in an objective area where the objective information are gotten in an online manner. This issue is known as the online exchange learning issue. To accomplish this, we propose novel online move learning ideal models in which the source and target areas are utilized adaptively. We consider two distinctive issue settings: homogeneous exchange learning, and heterogeneous exchange learning. The proposed techniques work in an online way, where the weights of the source spaces are balanced powerfully. We give the error limits of the proposed techniques and perform exhaustive examinations on certifiable informational indexes to exhibit the viability of the proposed calculations.

**KEYWORDS:** Online transfer learning, multiple source domains, heterogeneous transfer.

### I. INTRODUCTION

Online exchange learning is an essential research subject in information mining and machine learning and has been broadly contemplated for a long time[1]. It for the most part means to address the machine learning errands of building models in another objective space by exploiting data from another current source area through information exchange. Exchange learning is essential for some applications where preparing information in another space might be constrained or excessively costly, making it impossible to gather [2].

#### **Background:-**

For the heterogeneous setting, the source domain data and target domain data are in different feature spaces. A typical example is shown in Assuming the feature space of the target domain data is split into two sections, the source domain and the target domain share homogeneous features in the first section while the other section contains heterogeneous features. That is, the feature space of the source domain is a subset of the feature space of the target domain. Such settings hold for a variety of realworld applications. An example of heterogeneous multi-source transfer learning task is image classification in computer vision area where the acquisition of the labeled images of target domain is expensive [3]. However, we can collect labeled images containing a subset of features of the target image from several source domains as the heterogeneous source data.

# International Journal of Innovative Research in Science, Engineering and Technology

(A High Impact Factor, Monthly, Peer Reviewed Journal)

Visit: [www.ijirset.com](http://www.ijirset.com)

Vol. 6, Issue 11, November 2017

## Motivation:-

The online transfer learning contains a group of source domain and target that summarize the information about website but the information of learning subtopic are not clearly explained therefore in this paper we propose the this technique effectively.

## Objective and Scope:-

The main objective of transfer learning is to make use of labelled data from one or multiple source domainsto enhance the learning performance on a target domain in which labelled data for training are difficult to collect.

## Goal:-

The advantage is that these methods could be applicable to enhance the performance of the target task, we leverageknowledge extracted from offline source data.

## II. LITERATURE SURVEY

- H. Xia, S. C. Hoi, R. Jin, and P. Zhao, "Online multiple kernel similarity learning for visual search," Pattern Analysis and Machine Intelligence, IEEE Transactions on, vol. 36, no. 3, pp. 536–549, 2014**  
Late years have seen various examinations on separate metric figuring out how to enhance visual comparability look in Content-Based Image Retrieval (CBIR). Regardless of their triumphs, most existing strategies on separate metric learning are constrained in two angles. To start with, they more often than not accept the objective vicinity work takes after the group of Mahalanobis separations, which constrains their ability of measuring closeness of complex examples in genuine applications.
- Z. Wang, Y. Jiang, F. L. Chung, and H. Ishibuchi, "Transfer prototype based fuzzy clustering," IEEE Transactions on Fuzzy Systems, vol. 24, no. 5, 2014.**  
The conventional model based bunching strategies, for example, the outstanding fluffy c-mean (FCM) calculation, for the most part require adequate information to locate a decent bunching parcel. On the off chance that the accessible information is constrained or rare, a large portion of the current model based grouping calculations will at no time in the future be compelling. While the information for the present bunching assignment might be rare, there is typically some helpful learning accessible in the related scenes/spaces.
- J.Wang, S. C. Hoi, P. Zhao, and Z.-Y. Liu, " Online multi-task collaborative filtering for on-the-fly recommender systems," in Proceedings of the 7th ACM Conference on Recommender Systems. ACM, 2013, pp. 237–244.**  
This paper concentrates on investigating customized multi-undertaking learning approaches for community oriented sifting towards the objective of enhancing the forecast execution of rating expectation frameworks. These techniques first particularly distinguish an arrangement of clients that are firmly identified with the client under thought (i.e., dynamic client), and afterward take in various rating expectation models all the while, one for the dynamic client and one for each of the related clients.
- W. Pan and Q. Yang, "Transfer learning in heterogeneous collaborative filtering domains," Artificial intelligence, vol. 197, pp. 39–55, 2013.**  
We exhibit a novel structure of Transfer by CollectiveFactorization (TCF), in which we build a common inert space by and large and take in the information subordinate impact independently. A noteworthy preferred standpoint of the TCF approach over the past bilinear strategy for aggregate grid factorization is that we can catch the datadependent impact when sharing the information free learning.

## International Journal of Innovative Research in Science, Engineering and Technology

(A High Impact Factor, Monthly, Peer Reviewed Journal)

Visit: [www.ijirset.com](http://www.ijirset.com)

Vol. 6, Issue 11, November 2017

5. **E.W. Xiang, S. J. Pan, W. Pan, J. Su, and Q. Yang, "Source-selection-free transfer learning," in IJCAI Proceedings-International Joint Conference on Artificial Intelligence, vol. 22, no. 3, 2011, p. 2355.**  
Exchange learning addresses the issues that labelled preparing information are lacking to create elite model. Commonly, given a target learning errand, most exchange learning approach requires to choose at least one helper errands as sources by the originators. Be that as it may, how to choose the correct source information to empower viable learning exchange consequently is as yet an unsolved issue, which restrains the materialness of exchange learning. In this paper, we make one stride ahead and represent a novel exchange learning system, known as source-determination free exchange learning (SSFTL), to free clients from the need to choose source areas. Rather than approaching the clients for source and target information sets, as conventional exchange learning does, SSFTL swings to some online data sources such as World Wide Web or the Wikipedia for offer assistance.
6. **P. Zhao, S. C. Hoi, and R. Jin, "Double updating online learning," Journal of Machine Learning Research, vol. 12, no. May, pp. 1587–1615, 2011.**  
In this paper, we propose a new online learning method, termed Double Updating Online Learning, or DUOL for short, that explicitly addresses this problem. Instead of only assigning a fixed weight to the misclassified example received at the current trial, the proposed online learning algorithm also tries to update the weight for one of the existing support vectors. We show that the mistake bound can be improved by the proposed online learning method.
7. **M. Tan, L. Wang, and I. W. Tsang, "Learning sparse svm for feature selection on very high dimensional datasets," in Proceedings of the 27<sup>th</sup> International Conference on Machine Learning (ICML-10), 2010, pp. 1047–1054.**  
An inadequate portrayal of Support Vector Machines (SVMs) as for input highlights is attractive for some applications. In this paper, by presenting a 0-1 control variable to each information include, 10-standard Sparse SVM (SSVM) is changed over to a blended whole number programming (MIP) issue. Instead of straightforwardly illuminating this MIP, we propose a productive cutting plane calculation joining with numerous portions figuring out how to tackle its raised unwinding. A worldwide union evidence for our technique is likewise introduced.
8. **M. Dredze, K. Crammer, and F. Pereira, "Confidence-weighted linear classification," in Proceedings of the 25th international conference on Machine learning. ACM, 2008, pp. 264–271.**  
We present certainty weighted direct classifiers, which add parameter certainty data to straight classifiers. Online learners in this setting refresh both classifier parameters and the gauge of their certainty. The specific online calculations we ponder here keep up a Gaussian circulation over parameter vectors and refresh the mean and covariance of the appropriation with each case.
9. **S. Shalev-Shwartz and Y. Singer, "Online learning: Theory, algorithms, and applications," 2007.**  
Web based learning is the way toward noting a grouping of inquiries given information of the right answers to past inquiries and perhaps extra accessible data. Noting questions in a canny manner and having the capacity to settle on sound choices accordingly is an essential component of regular day to day existence. Will it rain today (so would it be a good idea for me to take an umbrella)? Should I battle the wild creature that is after me, or would it be advisable for me to flee? Would it be a good idea for me to open a connection in an email message or is it an infection? The investigation of internet learning calculations is along these lines an imperative area in machine learning, and one that has fascinating hypothetical properties and down to earth applications
10. **K. Crammer, O. Dekel, J. Keshet, S. Shalev-Shwartz, and Y. Singer, "Online passive-aggressive algorithms," The Journal of Machine Learning Research, vol. 7, pp. 551–585, 2006.**  
We display a group of edge based web based learning calculations for different expectation assignments. Inspecific we determine and dissect calculations for double and multiclass order, relapse, uniclass expectation and succession

# International Journal of Innovative Research in Science, Engineering and Technology

(A High Impact Factor, Monthly, Peer Reviewed Journal)

Visit: [www.ijirset.com](http://www.ijirset.com)

Vol. 6, Issue 11, November 2017

forecast. The refresh ventures of our distinctive calculations are all in view of explanatory answers for basic compelled enhancement issues.

### III. EXISTING SYSTEM APPROACH

For the heterogeneous setting, the source area information and target area information are in various element spaces. A run of the mill illustration is appeared in Assuming the element space of the objective area information is part into two segments, the source area and the objective area share homogeneous components in the principal segment while the other segment contains heterogeneous elements [4]. That is, the component space of the source area is a subset of the element space of the objective area. Such settings hold for an assortment of genuine applications. A case of heterogeneous multi-source exchange learning errand is picture order in PC vision range where the securing of the marked pictures of target area is costly. Notwithstanding, we can gather named pictures containing a subset of elements of the objective picture from a few source areas as the heterogeneous source information.

#### Existing system Disadvantage

- Online transfer learning has attracted a lot of attention in the community of machine learning.
- In the online transfer learning problem, we aim at performing an online learning task in a target domain by leveraging knowledge from some offline source data.

### IV. PROPOSED SYSTEM APPROACH

An online learning algorithm sequentially updates a classifier based on the feedbacks of a data sequence by processing each instance upon its arrival. The classifier firstly receives an instance at each round, makes a prediction and obtains the ground-truth label [5]. Then the classifiers are updated based on the loss information according to the predicted result and the true label. To enhance the performance of the target task, we leverage knowledge extracted from offline source data. Instead of focusing solely on a single source domain, we investigate online transfer learning with multiple source domains. We consider two different situations: (i) homogeneous transfer learning where the source and target data are in the same feature space; (ii) heterogeneous transfer learning where the source and target data are represented in different feature spaces.

#### Proposed system Advantage

- We propose novel online transfer learning algorithms with multiple source domains for both homogeneous and heterogeneous transfer learning.
- We validate the effectiveness of the proposed methods by conducting extensive experiments on real-world data sets.

# International Journal of Innovative Research in Science, Engineering and Technology

(A High Impact Factor, Monthly, Peer Reviewed Journal)

Visit: [www.ijirset.com](http://www.ijirset.com)

Vol. 6, Issue 11, November 2017

## Proposed system architecture

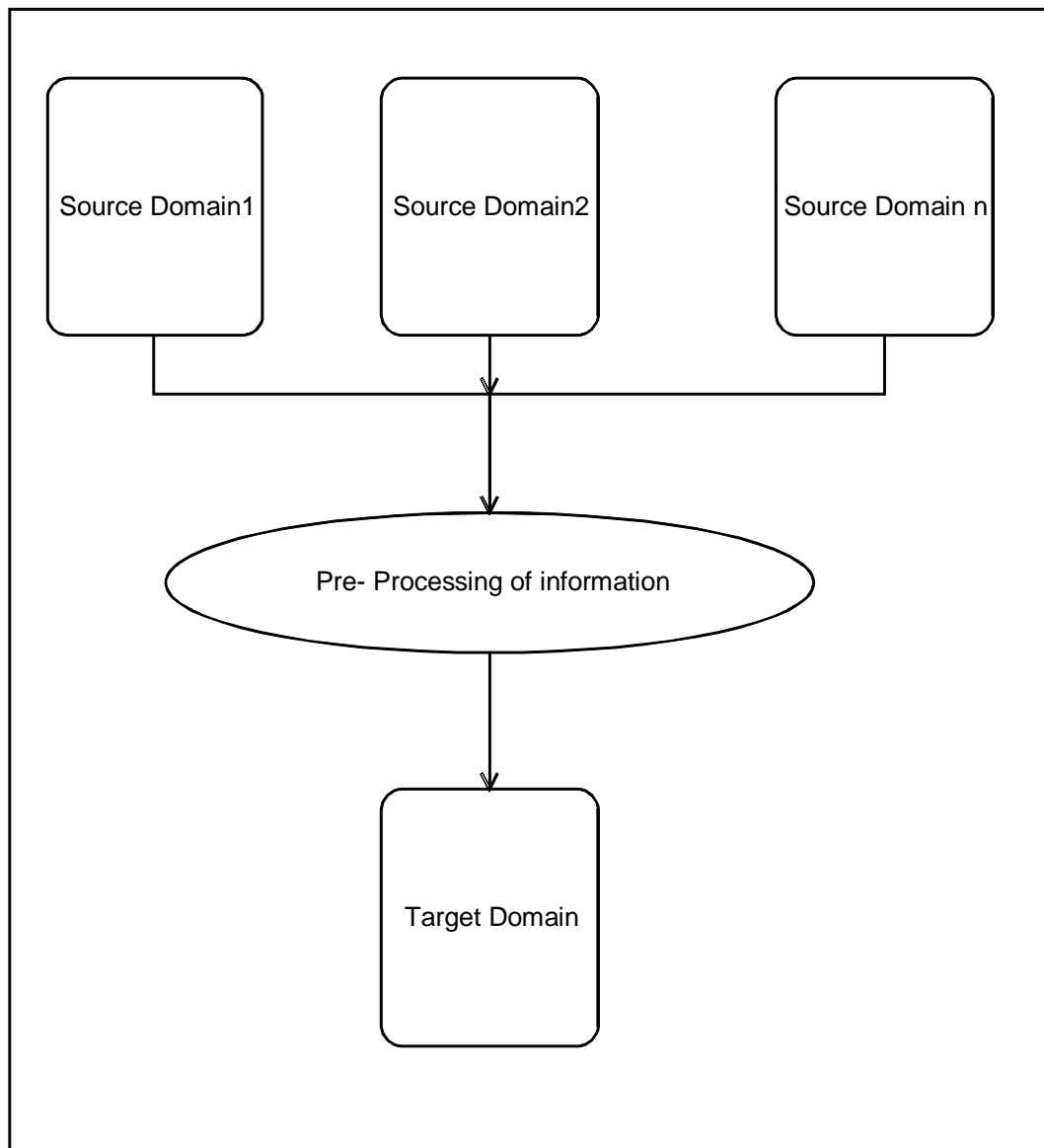


Fig.1. System Architecture

### Explanation:

In this system, we fetch the information from multiple domains because we have labelled data for all source domains. We use multiple source domains because we want more information about the news. We classify the all information. We use two algorithms homogeneous and heterogeneous transfer learning algorithms. We process on this information classifier based on the feedbacks of a data sequence by processing each instance upon its arrival. The classifier firstly receives an instance at each round, makes a prediction and obtains the ground-truth label. Then the classifiers are updated based on the loss information according to the predicted result and the true label. We display the information on target domain.

# International Journal of Innovative Research in Science, Engineering and Technology

(A High Impact Factor, Monthly, Peer Reviewed Journal)

Visit: [www.ijirset.com](http://www.ijirset.com)

Vol. 6, Issue 11, November 2017

## V. CONCLUSION

In this project, we propose an online exchange learning worldview with various source spaces. A homogenous online exchange learning calculation and a heterogeneous online exchange learning calculation are both outlined. Contrasted with the conventional online exchange learning calculations which were intended for learning room a solitary source area, our techniques can exchange information from multi-source areas, even the source areas that have heterogeneous element space with the objective space. In light of the hypothetical examination, we can have a clearer comprehension of the parameters of the calculation on the error. Exploratory outcomes on three true informational collections show that the proposed calculations can accomplish better exhibitions against the thought about baselines, and the time cost increments are satisfactory. A few issues stay to be examined in our future work. Right off the bat, we just propose calculations to handle paired order errands. Along these lines, a multi-class characterization issue is one approach to expand our proposed calculations. Besides, in our heterogeneous settings, includes in the source area constitute a subset of those of the objective space. This may constrain the application situation for our calculation. Henceforth, extending our calculation settings to a more broad circumstance is of another future work. Finally, because of the substantial size of the objective area on an extensive scale informational index, the enhancements end up noticeably minimal. Later on, we will utilize a few procedures w.r.t. transitive exchange adapting, for example, source space choice or cases choice, to accomplish more changes.

## REFERENCES

- [1] H. Xia, S. C. Hoi, R. Jin, and P. Zhao, "Online multiple kernel similarity learning for visual search," *Pattern Analysis and Machine Intelligence, IEEE Transactions on*, vol. 36, no. 3, pp. 536–549, 2014.
- [2] Z. Wang, Y. Jiang, F. L. Chung, and H. Ishibuchi, "Transfer prototypebased fuzzy clustering," *IEEE Transactions on Fuzzy Systems*, vol. 24, no. 5, 2014.
- [3] J. Wang, S. C. Hoi, P. Zhao, and Z.-Y. Liu, "Online multi-task collaborative filtering for on-the-fly recommender systems," in *Proceedings of the 7th ACM Conference on Recommender Systems*. ACM, 2013, pp. 237–244.
- [4] W. Pan and Q. Yang, "Transfer learning in heterogeneous collaborative filtering domains," *Artificial intelligence*, vol. 197, pp. 39–55, 2013.
- [5] E. W. Xiang, S. J. Pan, W. Pan, J. Su, and Q. Yang, "Source-selection-freetransfer learning," in *IJCAI Proceedings-International Joint Conference on Artificial Intelligence*, vol. 22, no. 3, 2011, p. 2355.
- [6] P. Zhao, S. C. Hoi, and R. Jin, "Double updating online learning," *Journal of Machine Learning Research*, vol. 12, no. May, pp. 1587–1615, 2011.
- [7] M. Tan, L. Wang, and I. W. Tsang, "Learning sparse svm for feature selection on very high dimensional datasets," in *Proceedings of the 27<sup>th</sup> International Conference on Machine Learning (ICML-10)*, 2010, pp. 1047–1054.
- [8] M. Dredze, K. Crammer, and F. Pereira, "Confidence-weighted linear classification," in *Proceedings of the 25th international conference on Machine learning*. ACM, 2008, pp. 264–271.
- [9] S. Shalev-Shwartz and Y. Singer, "Online learning: Theory, algorithms, and applications," 2007.
- [10] K. Crammer, O. Dekel, J. Keshet, S. Shalev-Shwartz, and Y. Singer, "Online passive-aggressive algorithms," *The Journal of Machine Learning Research*, vol. 7, pp. 551–585, 2006.